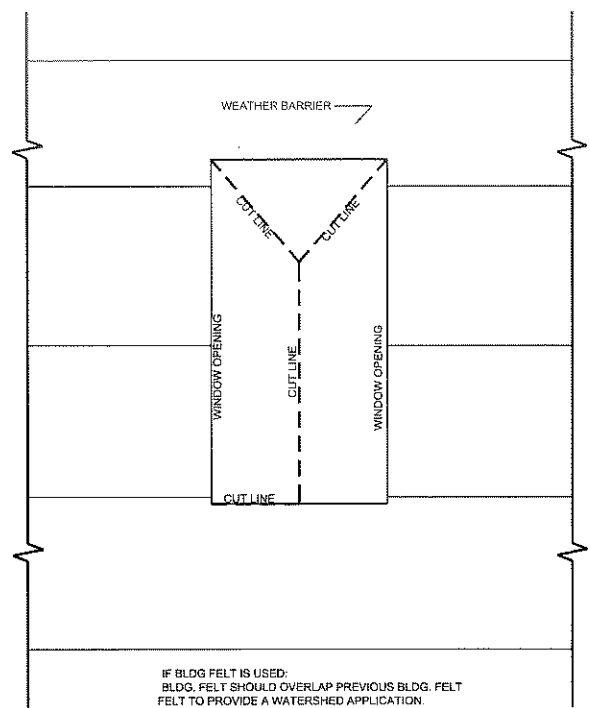


# Rough Opening Preparation



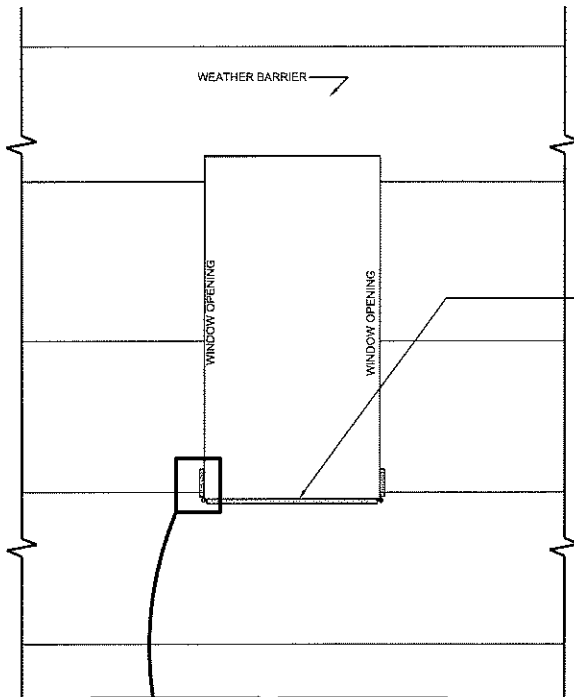
IF BLDG FELT IS USED:  
BLDG. FELT SHOULD OVERLAP PREVIOUS BLDG. FELT  
FELT TO PROVIDE A WATERSHED APPLICATION.  
CUT THE FELT AS ILLUSTRATED ABOVE  
FOLD INTO ROUGH OPENING



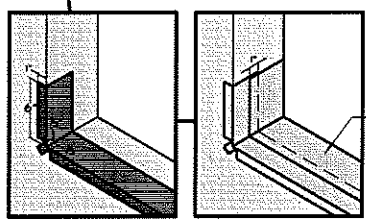
**S** QTY 1  
PDG ITEM #. 5  
LOCATION:

Composite ID	Unit ID	Product Code
S	5	ASCCMLH1Z2

SHOWN WITH 3/2" WOOD TRIM



PELLA SMARTFLASH FOIL BACKED, BUTYL WINDOW & DOOR FLASHING TAPE. ( or EQUAL ) APPLY OVER ROUGH OPENING SILL AND ONTO FACE OF FLASHING PAPER. EXTEND TAPE 6" UP JAMBS.  
CUT 1" WIDE TABS @ EACH CORNER (1" FROM EACH SIDE OF CORNER). FOLD WINDOW FLASHING TAPE TO EXTERIOR & PRESS DOWN FIRMLY TO ADHERE TO FLASHING PAPER.  
ADD 2ND PIECE OF PELLA SMARTFLASH FOIL BACKED, BUTYL WINDOW & DOOR FLASHING TAPE. ( or EQUAL )  
SEE DETAIL 2 BELOW FOR INSTALLATION.



CUT 2ND PIECE OF PELLA SMARTFLASH FOIL BACKED, BUTYL WINDOW & DOOR FLASHING TAPE. ( or EQUAL ) ( SAME LENGTH AS FIRST ) & APPLY TO ROUGH OPENING SILL, OVERLAP 1ST TAPE BY 1" (SEE DETAIL 2). DO NOT ALLOW TAPE #2 TO EXTEND BEYOND INTERIOR FACE OF FRAMING.

REVISIONS		
NO.	DATE	PROJECT NO.

AS PER REQUEST OF  
**THE CITY OF OVERLAND PARK KS**  
LOCATION:  
ARCHITECT:  
DISTRIBUTOR: 215



**R.O. PREP - ELEVATION**  
DRAWN BY: TOM LUSE  
CHECKED BY: JE TH  
DATE: 4-24-07  
ARCHITECTURAL SUPPORT SERVICES DEPARTMENT  
SCALE: 1/2"=1'-0"  
PROJECT NO.: 74865  
SHEET NO. 1 OF 4  
Window and Door Installation Solutions

**DETAIL KEYNOTES**

**AC : ATTACHMENT COMPONENTS**

AC01.01 INSTALLATION FIN #4267. ANCHOR THROUGH EACH PRE-PUNCHED HOLE AS FOLLOWS:  
WOOD: 2" GALVANIZED ROOFING NAILS

AC03.04 PELLA® SMARTFLASH™ WINDOW & DOOR FLASHING TAPE (OR EQUAL). APPLY OVER ROUGH OPENING SILL EXTENDING 6" UP EACH JAMB & OVERLAP ONTO FACE OF WEATHER RESISTIVE BARRIER.

AC03.11 PELLA® SMARTFLASH™ WINDOW & DOOR FLASHING TAPE (OR EQUAL). APPLY OVER INSTALLATION FIN ONTO WALL SURFACE.

**BC : BUILDING COMPONENTS (BY OTHERS)**

BC05.02 PRIOR TO UNIT INSTALLATION, PROVIDE LEVEL OPENING SURFACE BY ATTACHING 1" WIDE IMPERVIOUS SHIM 1/2" FROM EACH OPENING JAMB & AT WINDOW MULLION AS REQUIRED.

BC05.06 SHIM & PLUMB UNITS AS REQUIRED. TO KEEP JAMBS STRAIGHT.

**JE : JAMB EXTENSIONS & INTERIOR TRIM**

JE01.00 PRE-APPLIED JAMB EXTENSION

**TM : THERMAL & MOISTURE PROTECTION**

TM02.09 THRU-WALL SILL FLASHING. SEAL TO WALL CONSTRUCTION BELOW UNIT INSTALLATION FIN. PROVIDE WEEPS TO EXTERIOR.

TM03.01 WATER RESISTANT BACKER ROD & SEALANT.

TM04.01 APPLY DOW GREAT STUFF™ PRO WINDOW & DOOR INSULATING FOAM SEALANT FULL DEPTH TO CREATE INTERIOR SEAL.

TM07.01 WEATHER RESISTIVE BARRIER. FOLD IN AT OPENING SILL & SECURE TO WALL CONSTRUCTION.

TM07.05 WEATHER RESISTIVE BARRIER.

REVISIONS		
NO.	DATE	PROJECT NO.
▲		
▲		

AS PER REQUEST OF  
**THE CITY OF OVERLAND PARK KS**

LOCATION: \_\_\_\_\_  
ARCHITECT: \_\_\_\_\_  
DISTRIBUTOR: 215

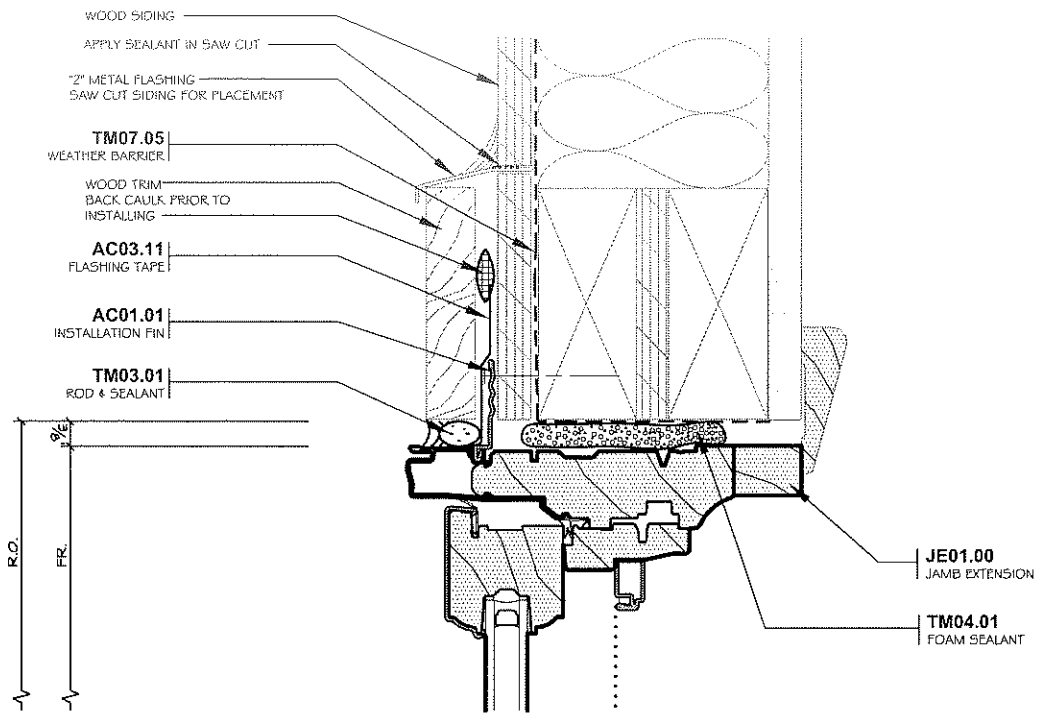


**DETAILS KEYNOTES**

DRAWN BY: TOM LUSE  
CHECKED BY: JG TH  
DATE: 4-24-07

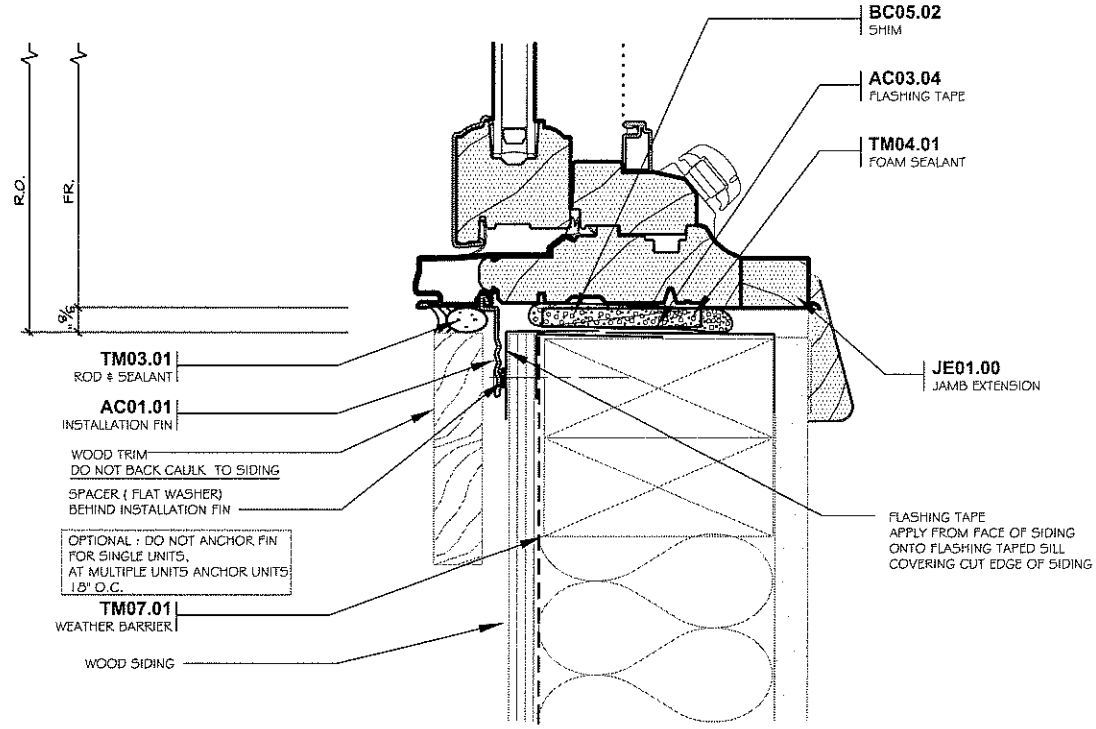
SCALE: NO SCALE  
PROJECT NO.: 74865  
SHEET NO. 2 OF 4

ARCHITECTURAL SUPPORT SERVICES DEPARTMENT Window and Door Installation Solutions



**1 HEAD**  
SCALE: 6" = 1'-0"

NOTES:  
REF. ARCH. DWG.:



**2 SILL**  
SCALE: 6" = 1'-0"

NOTES:  
REF. ARCH. DWG.:

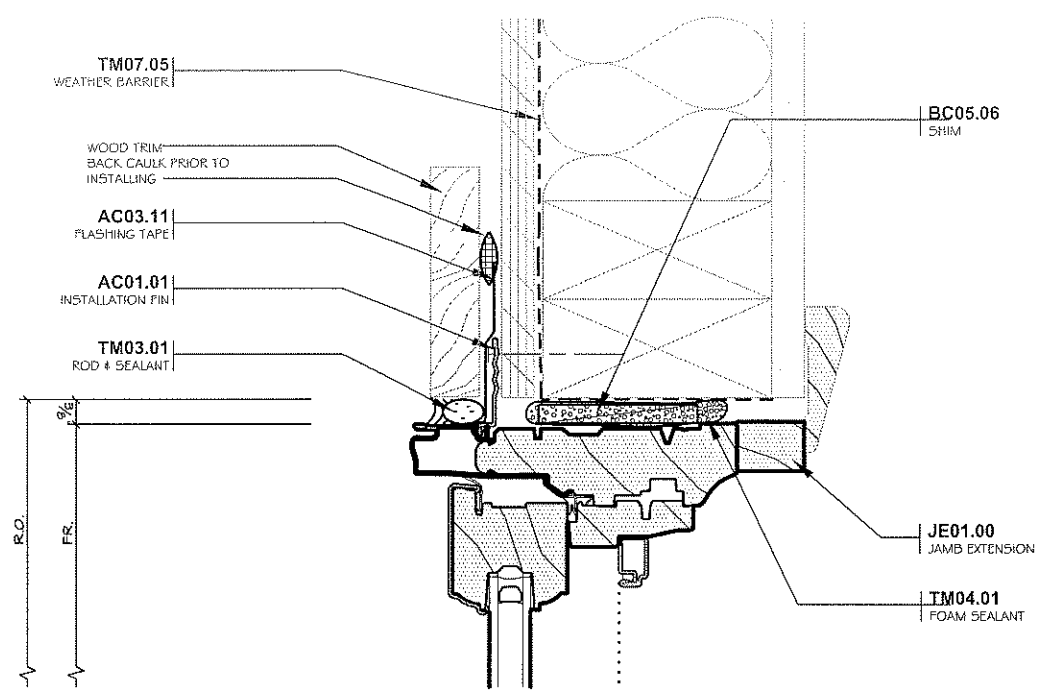
REVISIONS		
NO.	DATE	PROJECT NO.

AS PER REQUEST OF  
**THE CITY OF OVERLAND PARK KS**  
LOCATION:  
ARCHITECT:  
DISTRIBUTOR: 215



**HEAD-SILL DETAILS**  
DRAWN BY: TOM LUSE  
CHECKED BY: J. TH  
DATE: 4-24-07  
ARCHITECTURAL SUPPORT SERVICES DEPARTMENT

SCALE: 6"=1'-0"  
PROJECT NO.: 74865  
SHEET NO. 3 OF 4  
Window and Door Installation Solutions



**3 JAMB**

SCALE: 6" = 1'-0"

REF. ARCH. DWG.:

REVISIONS		
NO.	DATE	PROJECT NO.
△		
△		

AS PER REQUEST OF  
**THE CITY OF OVERLAND PARK KS**  
 LOCATION:  
 ARCHITECT:  
 DISTRIBUTOR: 215



**JAMB DETAIL**  
 DRAWN BY: TOM LUSE  
 CHECKED BY: JC TH  
 DATE: 4-24-07  
 ARCHITECTURAL SUPPORT SERVICES DEPARTMENT

SCALE: 6"=1'-0"  
 PROJECT NO.: 74865  
 SHEET NO. 4 OF 4  
 Window and Door Installation Solutions